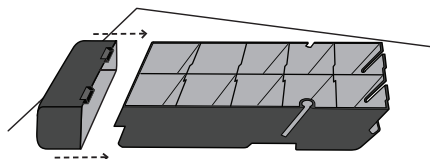
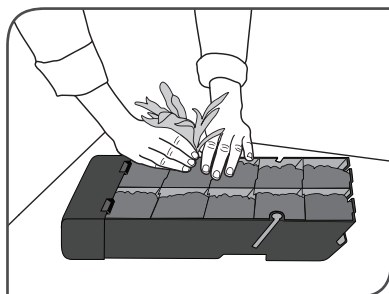
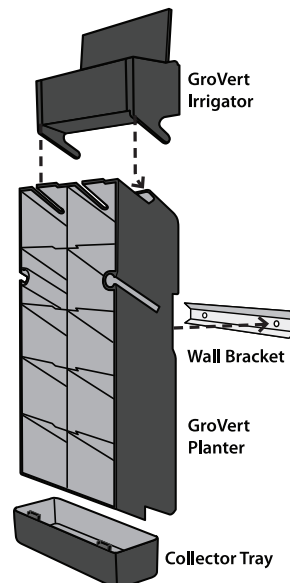


GroVert™

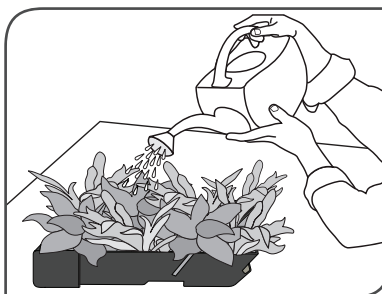
DESIGNER LIVING WALL PLANTER



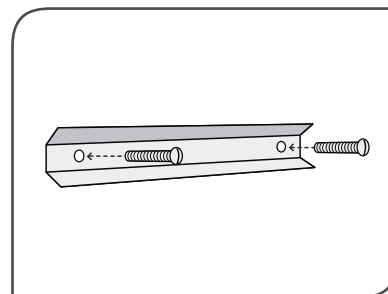
STEP 1 – Slide the collector tray into place on the bottom of the GroVert planter and click into position.



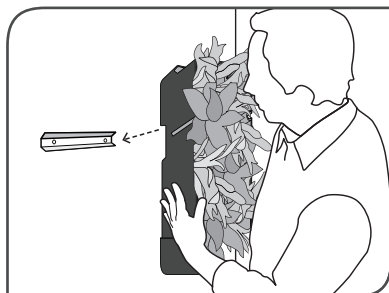
STEP 2 – Plant the GroVert planter on a horizontal surface by filling each of the 10 planting cells with soil and plants of your choice.



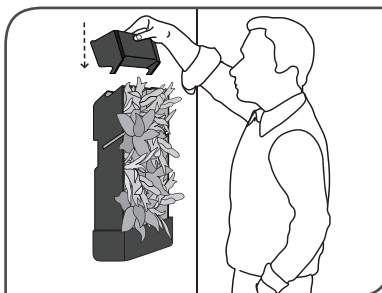
STEP 3 – Once the GroVert has been planted, we recommend a thorough watering while laying flat. Let it sit for 2 – 3 days to let the water settle.



STEP 4 – Attach the mounting bracket to a secure vertical wall, making sure to keep it level. *(Screws not included.) (Total weight with plants is approximately 25 lbs.)*



STEP 5 – Simply set the GroVert planter onto the secured wall bracket by matching the notch in the planter back over the bracket.



STEP 6 – Slide the GroVert Irrigator into the top planter grooves for easy watering.



STEP 7 – Water as needed through the top Irrigator. Sit back, relax and enjoy your Living Piece of Art.